

TE1092 Cable Clamp

Application

Application Cable and Wire clampbracket will provide optimum strainrelief

Construction Allows a large difference in maximum and minimum cable and wire diameters

Connectors

Suitable for This strain relief is designed to fit several type connectors. standard and high temperature connectors have the same mounting dimensions, other connectors such as ceramic or dual connectors have different dimensions, to specify when ordering

Material

Screws and bracket All Stainless Steel

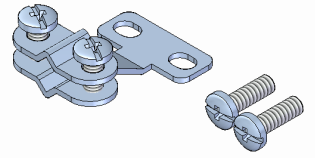
Ordering

Connector type Mini (M), or Standard (S) to specify

Connector material To fit:Standard and High temp(S), Ceramic (C), Dual standard (D) or Dual ceramic (DC), please specify

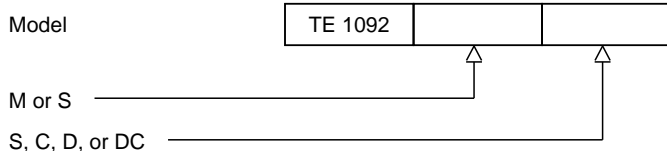
Options

Options Special U type brackets for dual standard connectors. Also crimp or solder inserts designed for soldering or crimping on mineral insulated cable or crimping on insulated wire are available



Ordering code

*This datasheet is purely indicative, build-up of model code may vary from this datasheet.



H9-1 Rev.0 7/07