

# FT 3085 Built-Up Thermowells – Length L >1200mm

## Thermowell

**Design** Solid barstock with welded flange with maximum length 2500mm  
>2500mm with seamless extension tube, solid barstock tip and welded flange

**Materials** SS 316 - (Wst 1.4401) standard, other materials possible

## Stem/Shaft

**Diameter** Last 200mm tapered 25mm to 20mm or other diameters possible

**Bore** 6.6mm standard, other diameters possible

**Bottom thickness** 5.0mm standard, other dimensions possible

**Instrument connection** 1/2" NPT, 3/4" NPT, 1/2" BSP, M20x1.5 or other threads possible

## Flange

**Flange facing** Flat Face, Raised Face, Ring Type Joint, Tongue Face or Groove Face

**Standards** ASME B16.5, DIN 2526/2527 or EN 1092-1

**Flange weld** Full Penetration, partial penetration or screwed flange seal welded

## Dimensions

**Insertion length** To specify

**Lagging** To specify, standard 60mm

**Flange size** To specify

**Flange rating** To specify

**Flange facing** To specify

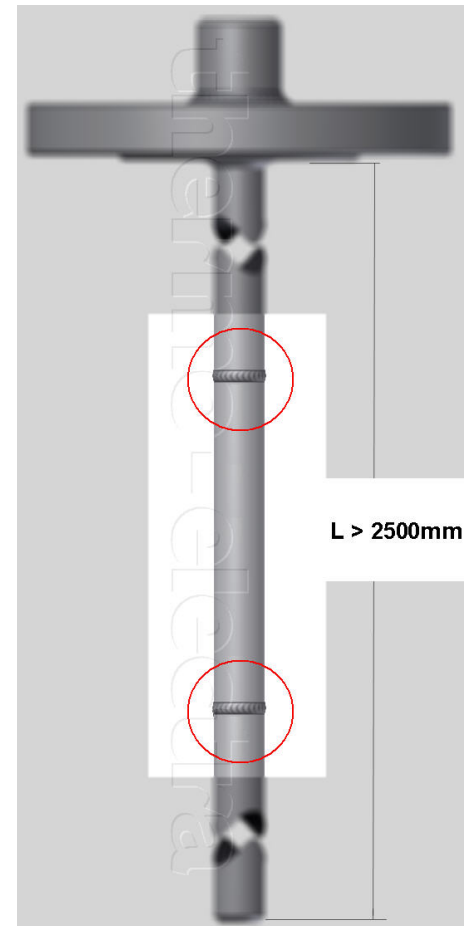
## Options

Other materials and dimensions

Protective coating, PTFE, Halar, Stellite etc.

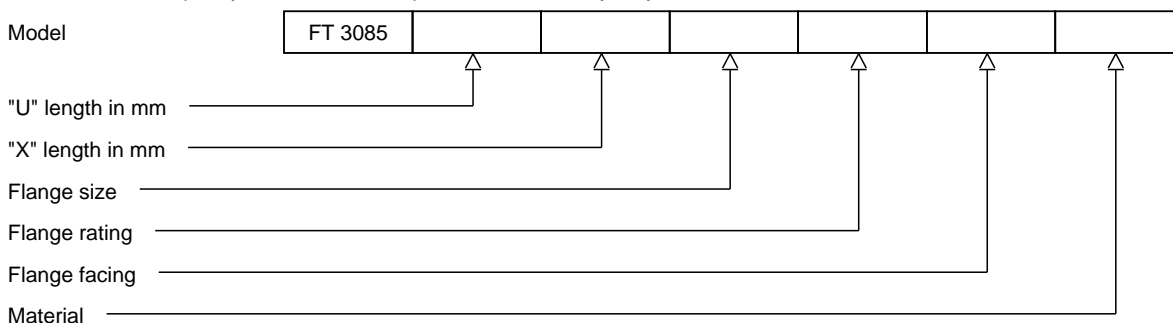
Tagging, Wake frequency calculation

Radiographic examination of welds and bores



## Ordering code

\*This datasheet is purely indicative, build-up of model code may vary from this datasheet.



H3-1 Rev. 07/07