

# TE1531 Mini panel jack with lugs

## Application

<b>Female panel connector</b>	Thermocouple and RTD circuits
<b>Contacts</b>	Springloaded thermocouple contacts
<b>Materials</b>	Glass filled thermoplastic body with original thermocouple material contacts

## Temperature rating

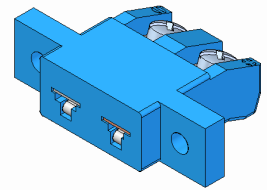
<b>Temperature limit</b>	Maximum 220°C
--------------------------	---------------

## Construction

<b>Body</b>	Glass filled thermoplastic material
<b>Design</b>	Self gripping stainless steel clip
<b>Molded barriers</b>	Prevent short circuit

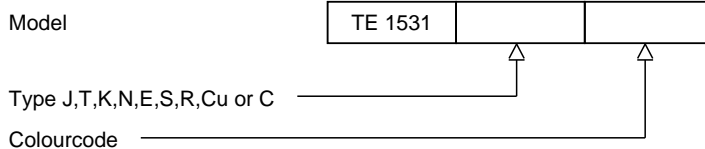
## Wire size

<b>Accepts wires</b>	From 0,002mm to 0,6mm.
<b>Style / Connection</b>	Easy wire connection through sandwich construction



## Ordering code

\*This datasheet is purely indicative, build-up of model code may vary from this datasheet.



H9-2Rev.0 7/07