

CA 2006 Resistance thermometer flanged to ANSI or DIN

Protection tube

Construction	Closed-end tube
Diameter	9.0mm standard, other diameters possible
Material	SS 316 - (Wst 1.4401) standard, other materials possible
length	Customer to specify
Process connection	Welded flange, size to be specified

Connection head

Material	Aluminium, plastic or stainless steel
Cable entry	M20 x 1.5 cable gland standard, other threads possible

Measuring insert

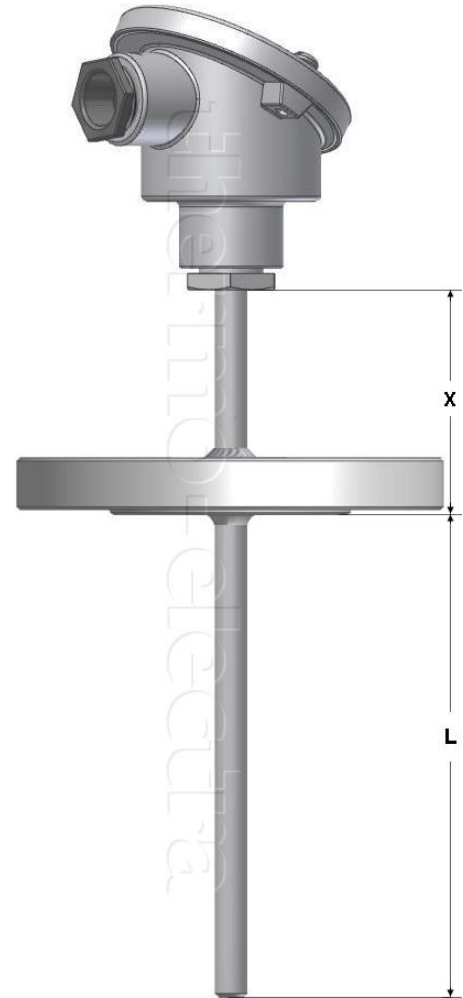
Type	MI 2025
Construction	Replaceable springloaded 6.0mm standard, other diameters possible
Material	SS 316 - (Wst 1.4401) standard, other materials possible

Sensor

	Single or Duplex Pt100
Accuracy	According IEC 60751 class B
Style / Connection	3-wire system standard, 4-wire system optional
Range	-220 /+ 600 °C

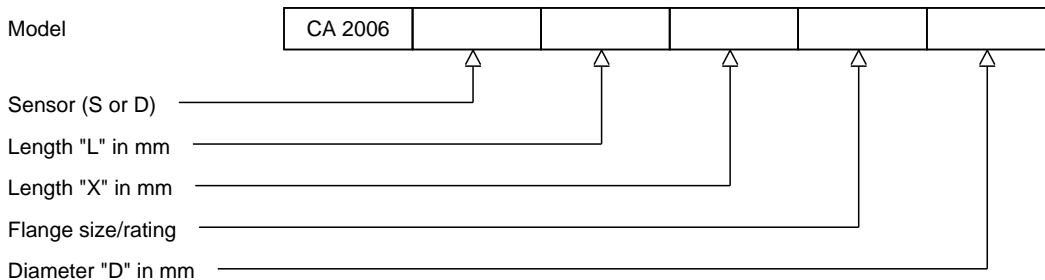
Options

Transmitter 4-20mA	In-Head transmitter, standard or Ex version. Please select from our standard range or specify your own standard
Swing-Cover head	DAN, transmitter direct mounted on measuring insert
High Swing-Cover head	DAN-H, transmitter in cover, insert with ceramic block



Ordering code

*This datasheet is purely indicative, build-up of model code may vary from this datasheet.



H2-1 Rev.0 7/07